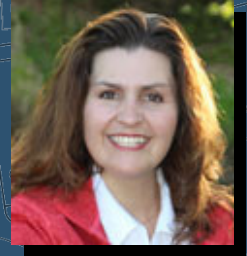


# KIDNEY CARE IN OREGON: HOUSE DISTRICT 3



Rep. Lily Morgan

Kidney disease affects an estimated 37 million people in the United States, and approximately 90% of those with kidney disease don't know they have it. With support from elected officials and the community, we can reduce kidney disease diagnoses, improve patient outcomes and pioneer new research that will inform best practices and innovative treatment methods for future generations. All data below is reported at a county level. More information and links to data sources are available at [NWKidneyCouncil.org](http://NWKidneyCouncil.org).

## Dialysis Footprint

2

Dialysis Centers

0

Nephrologists

142

ESRD Patients

End Stage Renal Disease (ESRD) is the 5th and final stage of CKD. Individuals with ESRD need dialysis or a kidney transplant to survive.

## Prevalence of Chronic Kidney Disease

21%

Josephine County

## Chronic Kidney Disease in Oregon



766

Oregonians  
waiting for a  
kidney transplant



76

kidney care  
facilities in the  
state



213

licensed  
nephrologists in  
the state



8,409

Oregonians living  
with End Stage  
Renal Disease