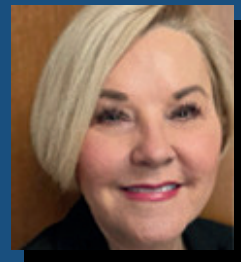


2025-26

# KIDNEY CARE IN OREGON: HOUSE DISTRICT 58



Rep. Bobby Levy

Kidney disease affects an estimated 37 million people in the United States, and approximately 90% of those with kidney disease don't know they have it. With support from elected officials and the community, we can reduce kidney disease diagnoses, improve patient outcomes and pioneer new research that will inform best practices and innovative treatment methods for future generations. All data below is reported at a county level. More information and links to data sources are available at [NWKidneyCouncil.org](https://NWKidneyCouncil.org).

## House District 58 Dialysis Footprint

**3** Dialysis Centers

**4** Nephrologists

**250** ESRD Patients

## House District 58 Prevalence of CKD

**20.26%**

The average prevalence rate for  
the counties in House District 58

End Stage Renal Disease (ESRD) is the 5th and final stage of Chronic Kidney Disease (CKD). Individuals with ESRD need dialysis or a kidney transplant to survive.

## Chronic Kidney Disease in Oregon



**833**

Oregonians  
waiting for a  
kidney transplant



**68**

kidney care  
facilities in the  
state



**186**

licensed  
nephrologists in  
the state



**8,715**

Oregonians living  
with End Stage  
Renal Disease